

*Fly Fishing Opportunities
at. The Dykel Bridge
Hotel*



Contents.....



	Page
Introduction & About the Hotel	3
Loch Fishing, Boats, Ghillies, our 'Self help' and Conservation Philosophy	4
Overview map of nearest Lochs to the Hotel	5
Loch Craggie	6
Loch Eileag	7
Loch Urigill	8
Loch Borrolan	9
Loch Ailsh	10
Loch Veyatie	11
Cam Loch	12
Loch Luirgainn	13
River Fishing	14
Upper Oykel Kanaird & Runie	
Further Opportunities	15
The Kyle of Sutherland AA Assynt Angling Group Lairg Angling Club	

Contact:
Dan Potts.
The Oykel Bridge Hotel.
Rosehall, by Lairg, Sutherland. IV27 4HE
Telephone: 01549 441 218

Email: info@oykelbridgehotel.com
Web: <http://oykelbridgehotel.com/scotland/hotel/>



Introduction & about the Hotel.

The Oykel Bridge Hotel and Fishing Lodge is situated in Sutherland, in the far north of Scotland and in one of the British Isles last great wildernesses.

This is an area of outstanding natural beauty, rich in wildlife, rivers and lochs.

The Oykel Bridge Hotel and Fishing Lodge sits in the heart of this beautiful area and it has created a unique opportunity to fish just some of the wild mountain lochs and rivers of this pristine environment.

With several lochs and a few rivers at his or her disposal, the fly angler has the challenge to fish something different every day of the week. The Oykel Bridge Hotel and Fishing Lodge has sixteen comfortable bedrooms, all ensuite and it prides itself on good wholesome highland cooking and a warm welcome.

All bedrooms have recently been refurbished and benefit from a public bar and a comfortable and spacious cocktail bar and lounge. Angler facilities include a warm drying room, rod room and tackle shop.

Loch Fishing, Boats, Ghillies, our 'Self help' and Conservation Philosophy

The Oykel Bridge Hotel sits amidst dramatic mountain scenery in the Assynt region of Sutherland and offers some of the most outstanding wild brown trout loch fishing available anywhere in Scotland, making it a natural location for any trout fisher to stay.

This unique area of upland heath, broad-leaved woodland, lochans, rivers and streams has been designated a Special Protection Area and it contains a number of Sites of Special Scientific Interest. Many of the lochs benefit from limestone intrusions resulting in highly productive fisheries with an excellent fly life, often with good mayfly hatches and an abundance of shrimp. Fish are free rising and Char and Ferox Trout are present in some of the lochs.

The fishing season runs from 15th March until 16th October. Fishing is restricted to traditional loch fly methods and sensible conservation measures are in place consistent with the SPA designation and the need to provide sustainable fishing for our iconic wild brown trout.

The hotel has its own fishing rights on Lochs Borrolan, Eileag, Urigill and Craggie and this fishing is freely available to hotel residents on a first come first served basis. New Coulam 15 boats and Honda 2.3HP outboards were purchased for these lochs in 2013. The hotel's fishing is let strictly on a self-reliance basis to experienced fishermen. People requiring assistance with boats and engines and/or guidance to fish our lochs must engage the services of an experienced boatman.

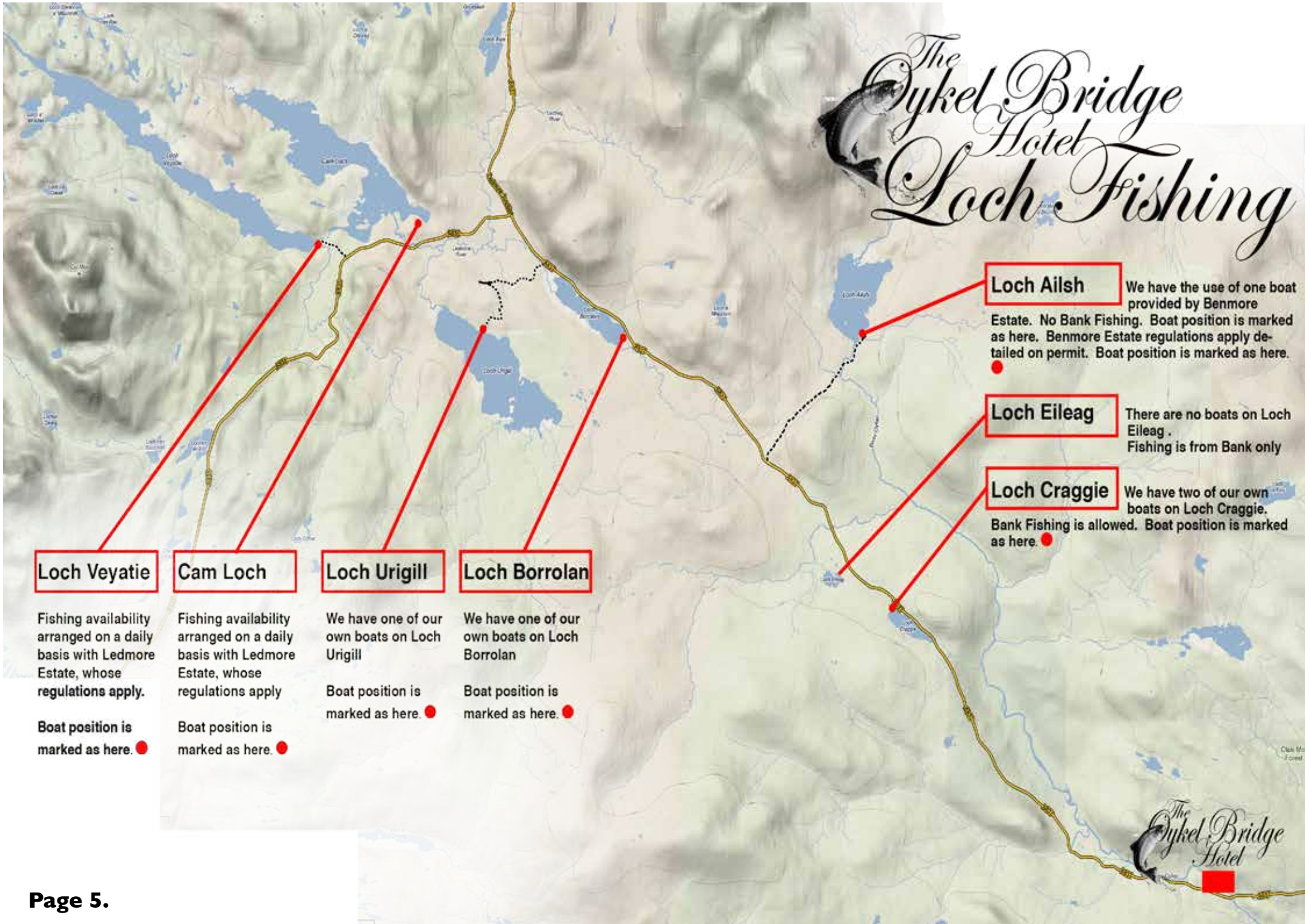
Fishing can also be arranged by agreement with Benmore Estate for one boat daily on Loch Ailsh, and through Ledmore Estate using their boats on Lochs Urigill, Luirgainn, Veyatie and Cam. Benmore and Ledmore regulations and charges apply.

Additional fishing in the area is also available through several independent clubs, through which the hotel can make arrangements, see page 15 for more details.

On a strictly limited basis some salmon fishing may also be available on the Upper Oykel in May to mid-June and also on the River Kanaird by arrangement with Ledmore Estate. Early enquiries about availability are strongly advised.

Note: All Bathymetric data is in Feet and is from the survey of 1902 by James Parons B.Sc., and T.R.H. Garrett B.A.

The Dykel Bridge Hotel Loch Fishing



Loch Veyatie

Fishing availability arranged on a daily basis with Ledmore Estate, whose regulations apply.

Boat position is marked as here. ●

Cam Loch

Fishing availability arranged on a daily basis with Ledmore Estate, whose regulations apply.

Boat position is marked as here. ●

Loch Urigill

We have one of our own boats on Loch Urigill

Boat position is marked as here. ●

Loch Borrolan

We have one of our own boats on Loch Borrolan

Boat position is marked as here. ●

Loch Ailsh

We have the use of one boat provided by Benmore Estate. No Bank Fishing. Boat position is marked as here. Benmore Estate regulations apply detailed on permit. Boat position is marked as here.

Loch Eileag

There are no boats on Loch Eileag. Fishing is from Bank only

Loch Craggie


We have two of our own boats on Loch Craggie. Bank Fishing is allowed. Boat position is marked as here. ●

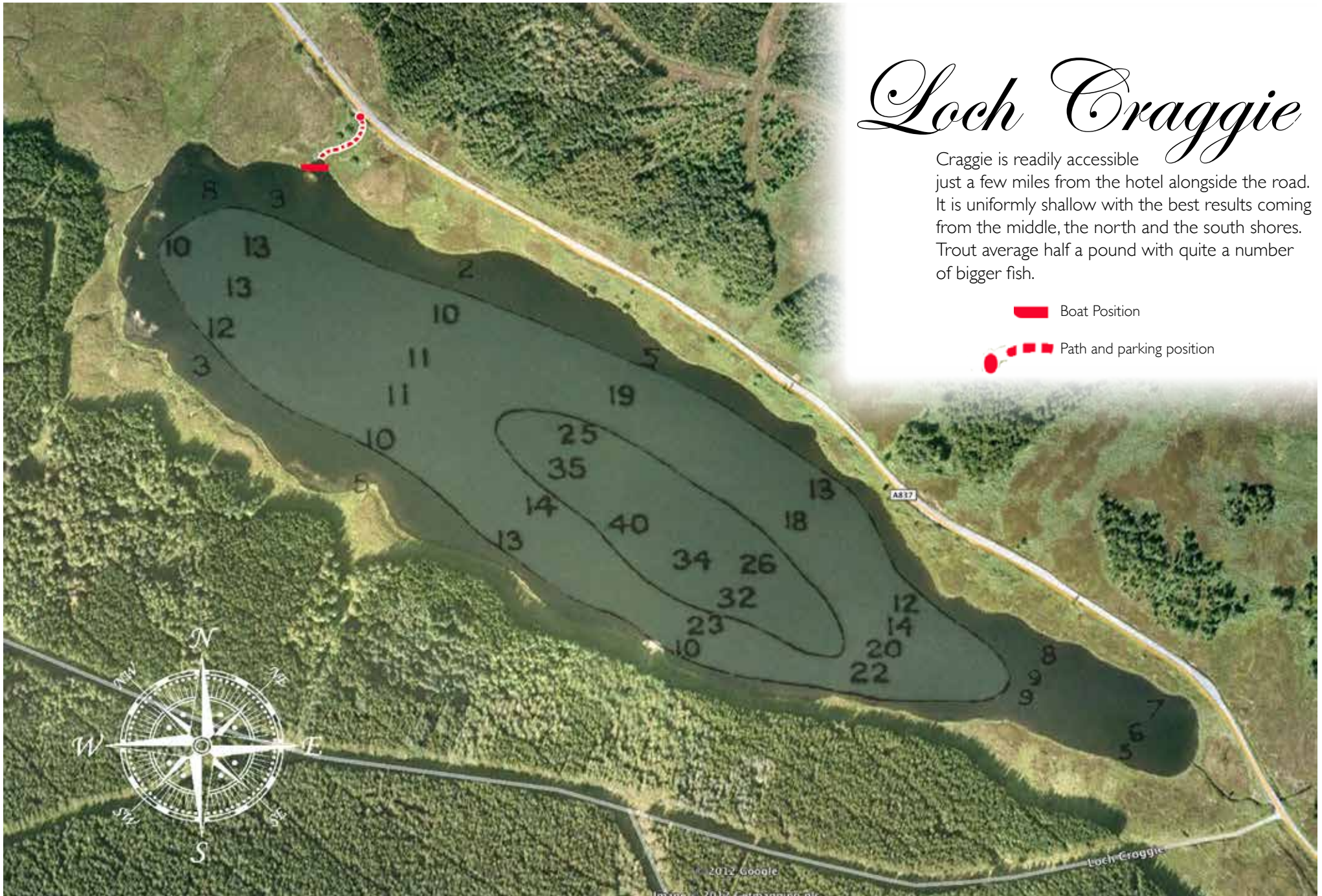


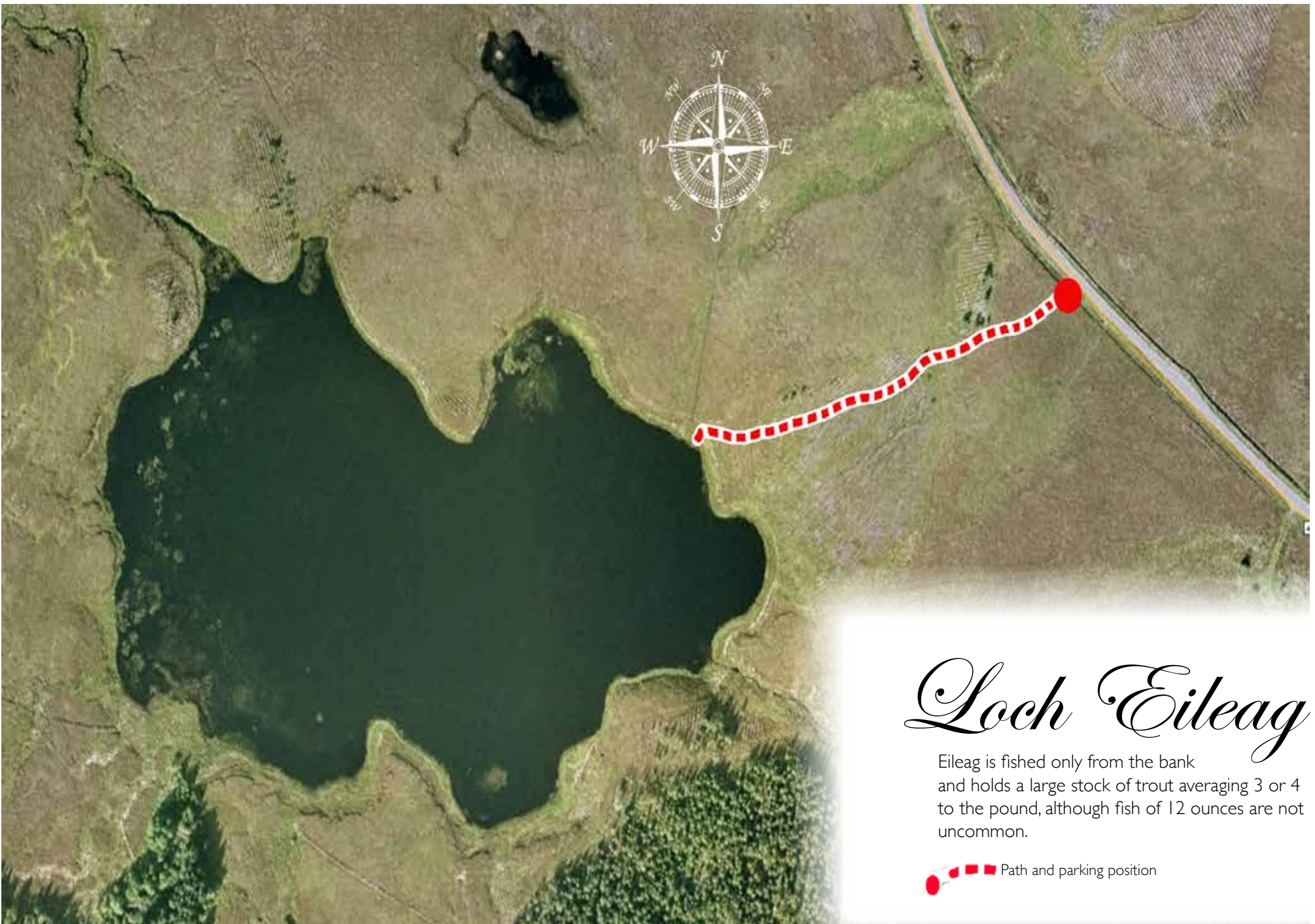
Loch Craggie

Craggie is readily accessible just a few miles from the hotel alongside the road. It is uniformly shallow with the best results coming from the middle, the north and the south shores. Trout average half a pound with quite a number of bigger fish.

 Boat Position


 Path and parking position

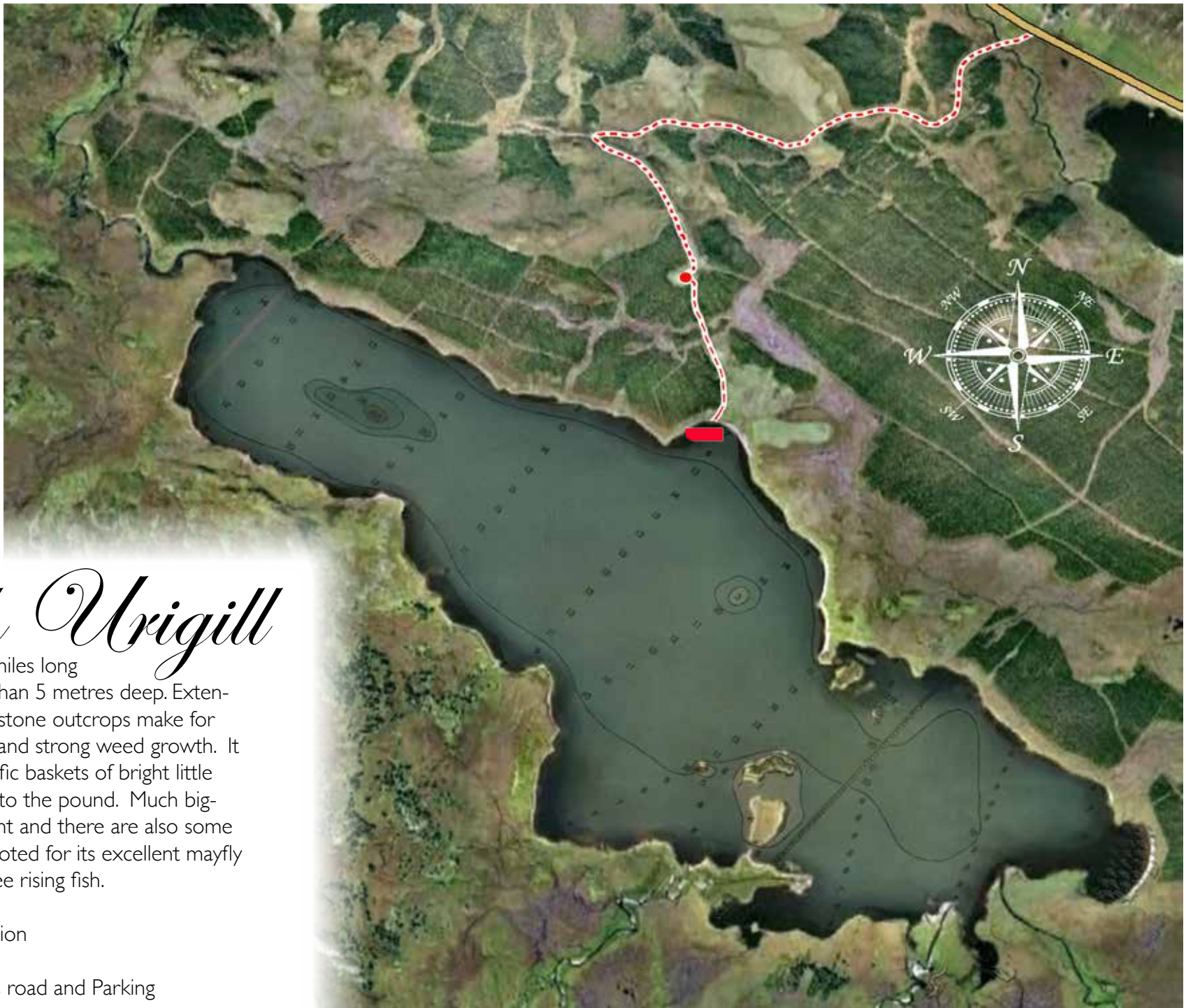




Loch Eileag


Eileag is fished only from the bank and holds a large stock of trout averaging 3 or 4 to the pound, although fish of 12 ounces are not uncommon.

 Path and parking position



Loch Urigill

Urigill is some 2 miles long and rarely more than 5 metres deep. Extensive Durness limestone outcrops make for excellent feeding and strong weed growth. It can produce prolific baskets of bright little trout averaging 3 to the pound. Much bigger fish are present and there are also some Arctic Char. It is noted for its excellent mayfly hatches and its free rising fish.

 Boat position

 Access road and Parking

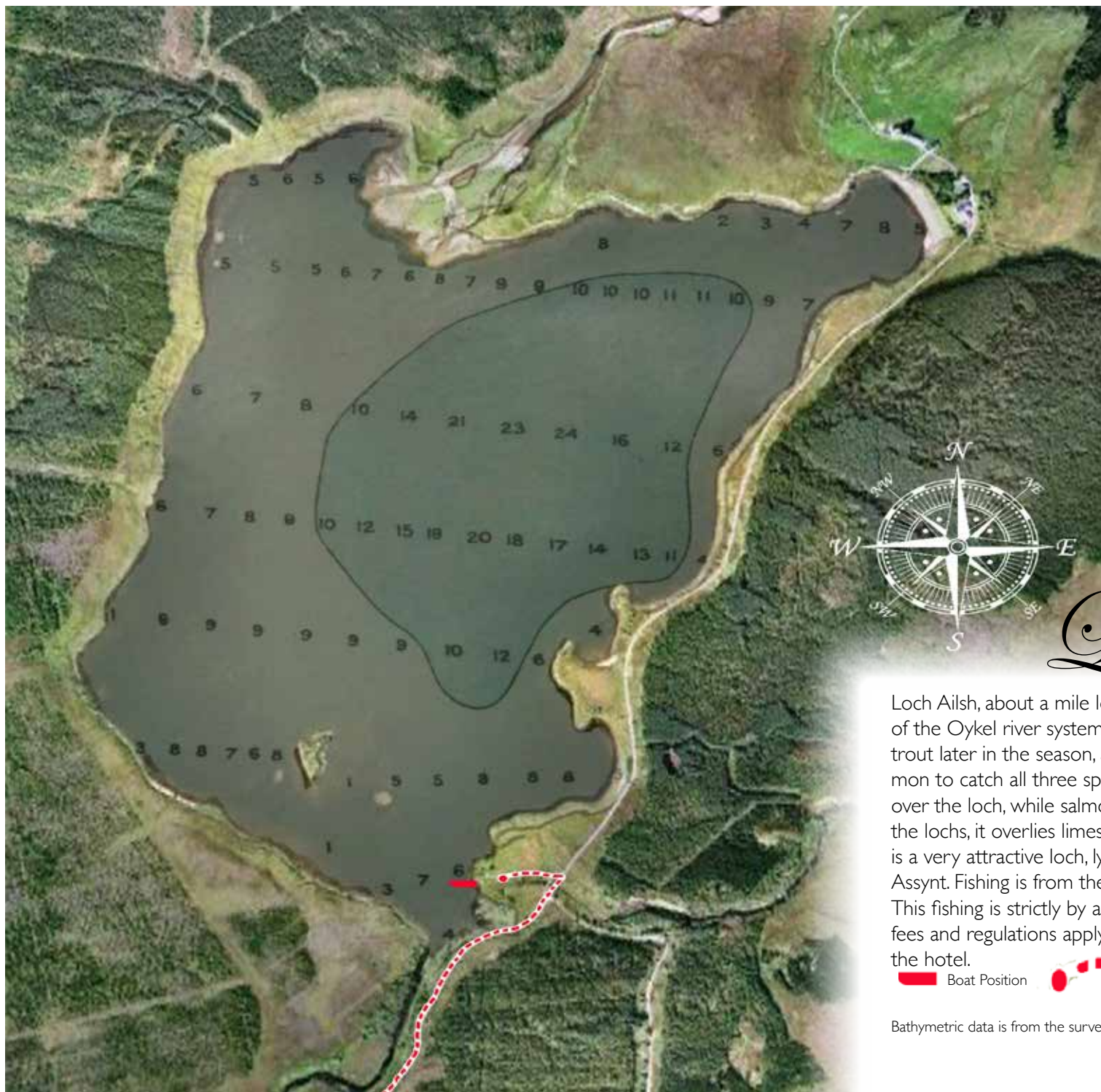


Loch Borrolan

Borrolan is a shallow loch about a mile long and easily accessed from the road. It sits on a uniquely alkaline rock structure, which results in a highly productive fishery. It holds substantial stocks of trout of 6 - 8 ounces, with some bigger fish up to 2lb. Char are also present.

 Boat Position  Path and parking position

Bathymetric data is from the survey of 1902 by James Parsons B.Sc., and T.R.H. Garrett B.A.



Loch Ailsh

Loch Ailsh, about a mile long by half a mile wide, lies near the head of the Oykel river system. It holds good stocks of salmon and sea trout later in the season, as well as quality brownies. It is not uncommon to catch all three species in one day! Trout may be caught all over the loch, while salmon are taken closer to shore. Like most of the lochs, it overlies limestone, which provides excellent feeding. This is a very attractive loch, lying in the imposing shadow of Ben More Assynt. Fishing is from the boat only.

This fishing is strictly by arrangement with Benmore Estate, whose fees and regulations apply. These are set out in the permit issued by the hotel.

 Boat Position
  Drive and parking position

Bathymetric data is from the survey of 1902 by James Parsons B.Sc., and T.R.H. Garrett B.A.



Ledmore Estate waters.


The hotel can arrange fishing on Ledmore Estate's waters and specifically on Loch Cam, Loch Veyatie and Loch Luirgainn. Ledmore Estate fees and regulations apply.

Loch Veyatie

Loch Veyatie is a magnificent loch, sandwiched between the beautiful mountains of Cul Mor and Suilven. It offers excellent trout fishing and is also renowned for ferox.

The Loch is over 4.5 miles long and over 150 feet deep in places.

 Boat Position

 Path and Parking



Cam Loch

Loch Cam is a wonderful loch to fish. It is full of small bays and islands, which offer shelter to the angler as well as plenty of feed for the trout. At its deepest it runs down to 125 feet with ferox caught to 16.5 lbs.

Boat Position

Parking



Loch Luirginn

Loch Luirginn situated
5 miles south of Ledmore in Ross-shire
boasts fine wild brown trout fishing as well as
ferox, char, salmon and sea trout.
Stac Pollaidh provides a sensational backdrop.





River Fishing

Upper Oykel

It may be possible to arrange on a limited basis for a salmon beat on the Upper Oykel from May to mid-June by arrangement with Upper Oykel Fishing Ltd.

There is a download Pdf file for more detailed information from our web site... or here...

http://oykelbridgehotel.com/site/pdfs/OykelBridgeHotel_FishingBrochure.pdf

Day rods may also be available from June to the end of September on the Benmore Estates Beat 2 stretch of the Upper Oykel. This beat is the second one below Loch Ailsh at the top of the river. The river here has good gradients with challenging rocky runs and small pools. It fishes best at good water levels and is suited to either a single handed rod or a double hander up to 13'.

Please contact us for availability

Ledmore Estate River fishing

Kanaird and Runie

The river Kanaird is located just a few miles north of Ullapool, and offers challenging fly fishing for both salmon and sea trout. The river is a classic West Coast spate river originating in the hills of west Sutherland and flowing into Ardmail Bay via Loch Kanaird. The Keanchulish beats occupy 4 miles of double bank fishing on the lower river before it enters Loch Kanaird, and also included is a tributary, the river Runie.